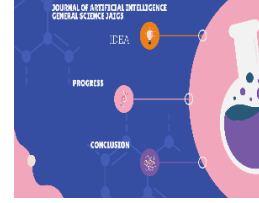




Vol.2, Issue 01, March 2024  
Journal of Artificial Intelligence General Science JAIGS

Home page <http://jaigs.org>



## **Actual Method of determining Time Traveling in Past and Simulation**

**Gaurangkumar Girishbhai Patel**

**Applied Business Management, University of Manitoba, Canada**

\*Corresponding Author: Gaurangkumar Girishbhai Patel

### *ABSTRACT*

#### **ARTICLEINFO**

##### **Article History:**

*Received:*

*05.03.2024*

*Accepted:*

*01.04.2024*

*Online: 17.04.2024*

**Keyword: Time  
Traveling,  
Simulation, Method**

People and Scientists spend decades checking Time travelling is possible or not. Yes, travelling in future is possible and proved many ways but when it comes to traveling in Past people start discussing Quantum level, or in simulation and try to prove with formulas. Moreover, it's the same whether we are in simulation or not. However, I am going to tell the actual method to check if it's possible or not. I am using radioactive atom or the Muon to check instead of Theory or Formula. It will open gates for actual practical approach to check that we are in simulation or time traveling possible in the past.

## Introduction

---

- Time flows in one direction, that's modern science called Arrow of time. In CERN (European Organization for Nuclear Research) Had experiment on Muons that experiment called The Muon g-2 Experiment. In that experiment confirmed the theory of time dilation introduced by Einstein's theory of relativity. “The Muon g-2 Experiment: This ongoing experiment studies the properties of muons, subatomic particles similar to electrons but much heavier. Muons are unstable and normally decay within a few microseconds. However, due to time dilation, muons traveling at high speeds in the accelerator's ring live longer from the perspective of a stationary observer compared to muons at rest. By precisely measuring the muon's lifetime, scientists can confirm the predictions of time dilation with high accuracy.”<https://muon-g-2.fnal.gov/>
  - Many modern researchers and PHD holders so far believed that at quantum level atoms travel in all directions, if it's true then we are living in simulation.
  - I am saying its simulation because the data should be stored somewhere, to make its reversable any action or converting energy back into original form, where it's started. It's only possible if we are in simulation. The Law of Conservation of Energy allow, or The Gita said This law states that energy cannot be created or destroyed, only transformed from one form to another, and if the humankind able to time travel backward mean converting energy in main form, means creating Perpetual motion machines or Isolated systems. I am using these words to just explain not to prove.
- 
- Here is an example of how people misunderstand it: - If we make program, that goes in further with time arrow and we treat those number as action and delete it as we go further means we are in present at point. If in future someone creates the software to resort that data doesn't mean that time traveling in past possible. The computer system and simulation were just to give ideas. Even if we use software it uses energy. All happing in present even we are restoring data.

## Methods

---

- The actual practical method is checking time travelling in the past is possible by using radioactive isotope or The Muons.
- Let's see what half is –life or decay time: - “When a radioactive atom decays, it becomes a different element. The amount of time that it takes one half of the atoms present to decay is called “half-life.” Every radioactive isotope has a specific half-life.”  
<https://www.epa.gov/radtown/radtown-radioactive-atom-activity-5-half-life#:~:text=When%20a%20radioactive%20atom%20decays,has%20a%20specific%20half%20life.>
- extension://efaidnbmnnnibpcajpcgiclfindmkaj/https://122.physics.ucdavis.edu/course/cosmology/sites/default/files/files/Muon%20Lifetime/Muon%20Lifetime%202021.pdf.  
This is a method of finding the half-life of Muon.

So, for the practice use or finding that Time reversal or travelling in time backward is possible just use actual data of Muon life vs Muon used in excrement. So, without giving speed if Muon life increase via backward time travelling process or method then time travelling is possible.

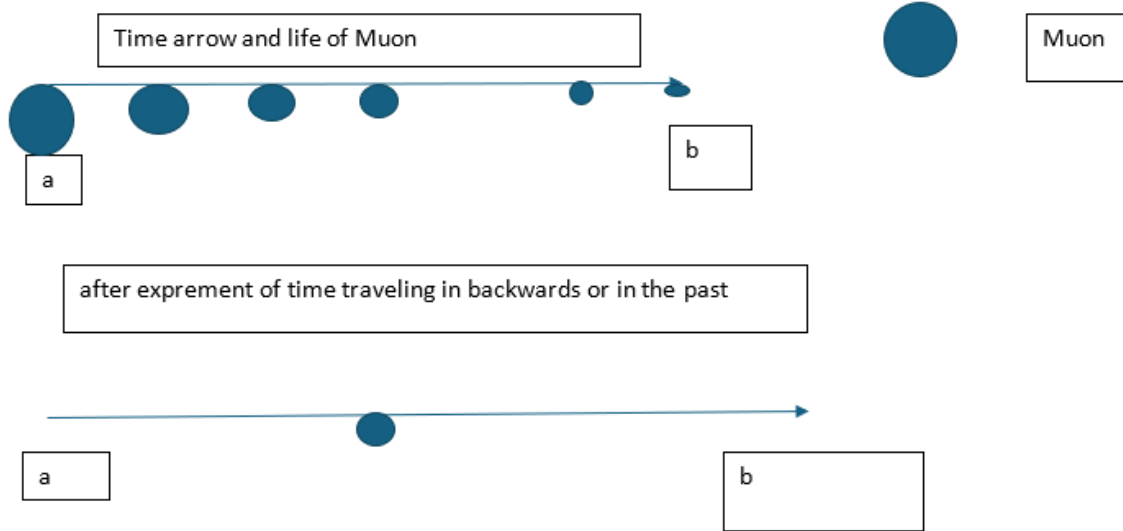
It's just making sure that in Time arrow point A to B and in picture just to explain life is getting over, over the period, and if life increased vis experiment or after reaching point B then it's traveling back in time.

So, over the period if speed is used with backward time travelling then still actual life supposed be incased compared to just accelerating / troughing its faster.

then three comparisons need, actual life, life increased after speed and life increased after accelerating it while time backward practical.

So, over the period: - if speed is used with backward time travelling then actual life supposed be incased compared to just accelerating / troughing its faster.

if only time backward used then two comparisons needed.



## Results

---

### Universal approach

If The Muons life increased via backward time travelling process or time Crytal, then all should accept that Backward time travelling possible as life increased. Compared to life of Muon not used in this process. We don't need another The Muons as we have almost accurate data of life spend.

By :- *Gaurangkumar G Patel,*

*Previous student at University of Manitoba. Filed 3 cases in HRTO.*

---